

1

TYPICAL ONE BEDROOM UNIT - SECOND FLOOR UNFURNISHED

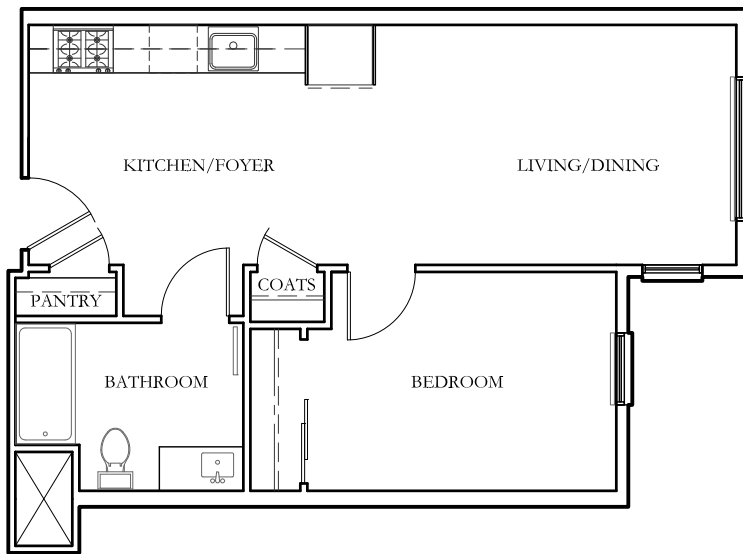
SCALE: 1/8" = 1'-0"



KIRK E. PETERSON
ASSOC. & ARCHITECTS
5253A College Avenue
Oakland, CA 94610
ph (510)547-0275
fax (510)547-4173

THE SOUTHGATE APARTMENTS
2526 DURANT AVENUE,
BERKELEY, CALIFORNIA

UNIT:	A1-1	SCALE:	AS NOTED
PROJECT NO.	1302	DATE:	March 11, 2016
SHEET #:	UA1		



1

TYPICAL ONE BEDROOM UNIT - THIRD-FIFTH FLOORS UNFURNISHED

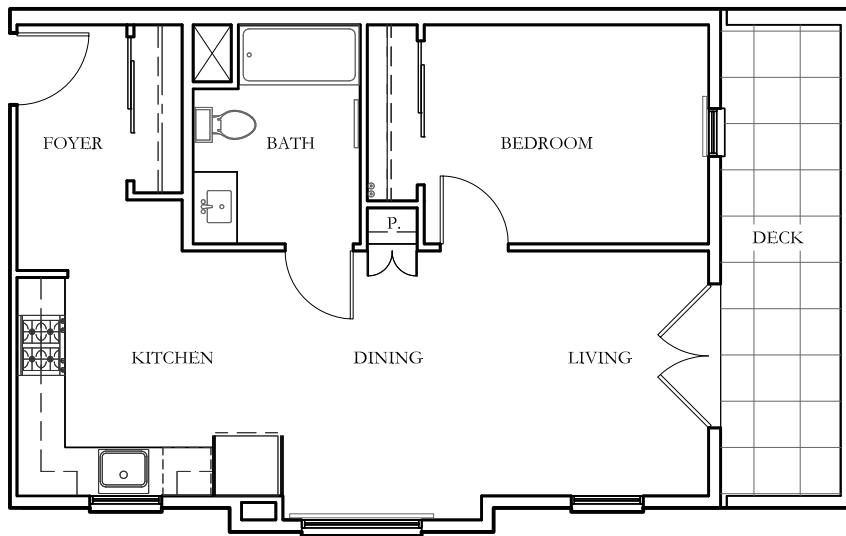
SCALE: 1/8" = 1'-0"



KIRK E. PETERSON
 ASSOC. & ARCHITECTS
 5253A College Avenue
 Oakland, CA 94610
 ph (510)547-0275
 fax (510)547-4173

THE SOUTHGATE APARTMENTS
 2526 DURANT AVENUE,
 BERKELEY, CALIFORNIA

UNIT:	A1-A	SCALE:	AS NOTED
PROJECT NO.	1302	DATE:	March 11, 2016
SHEET #:	UA1-A		



1

SOUTH ONE BEDROOM UNIT - SECOND FLOOR UNFURNISHED

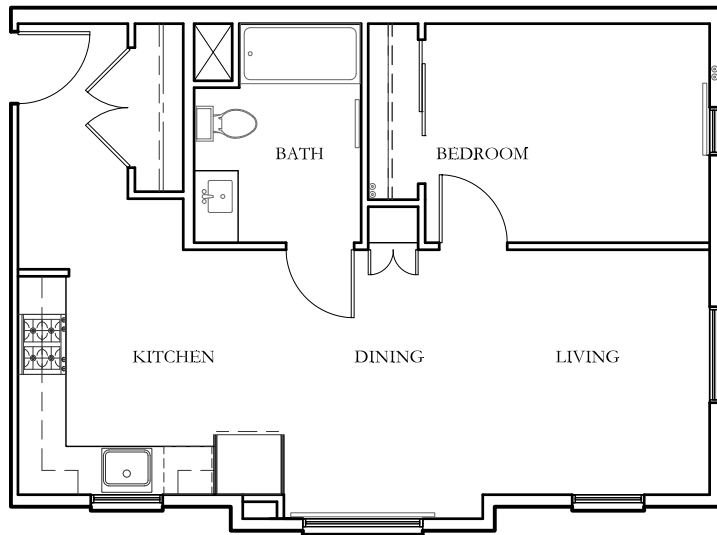
SCALE: 1/8" = 1'-0"



KIRK E. PETERSON
ASSOC. & ARCHITECTS
5253A College Avenue
Oakland, CA 94610
ph (510)547-0275
fax (510)547-4173

THE SOUTHGATE APARTMENTS
2526 DURANT AVENUE,
BERKELEY, CALIFORNIA

UNIT:	A2	SCALE:	AS NOTED
PROJECT NO.	1302	DATE:	March 11, 2016
SHEET #:	UA2		



1

SOUTH ONE BEDROOM UNIT - THIRD-FIFTH FLOORS UNFURNISHED

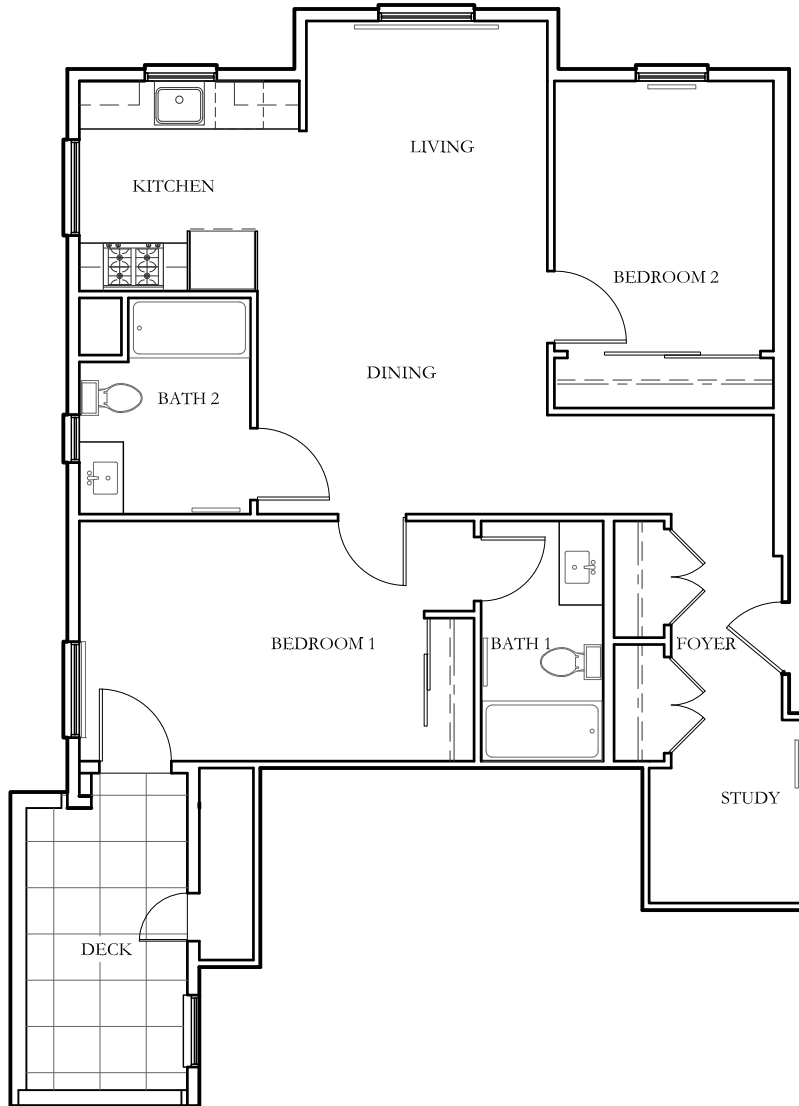
SCALE: 1/8" = 1'-0"



KIRK E. PETERSON
ASSOC. & ARCHITECTS
5253A College Avenue
Oakland, CA 94610
ph (510)547-0275
fax (510)547-4173

THE SOUTHGATE APARTMENTS
2526 DURANT AVENUE,
BERKELEY, CALIFORNIA

UNIT:	A2-A	SCALE:	AS NOTED
PROJECT NO.	1302	DATE:	March 11, 2016
SHEET #:	UA2-A		



1

NORTH WEST TWO BEDROOM UNIT - SECOND FLOOR UNFURNISHED

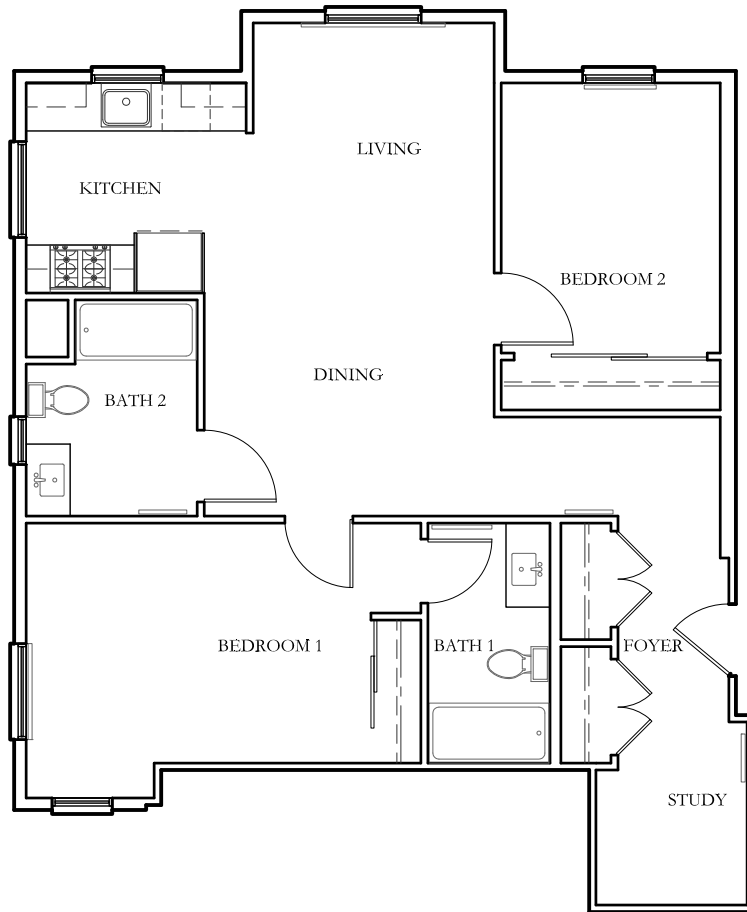
SCALE: 1/8" = 1'-0"



KIRK E. PETERSON
ASSOC. & ARCHITECTS
5253A College Avenue
Oakland, CA 94610
ph (510)547-0275
fax (510)547-4173

THE SOUTHGATE APARTMENTS
2526 DURANT AVENUE,
BERKELEY, CALIFORNIA

UNIT:	B1	SCALE:	AS NOTED
PROJECT NO.	1302	DATE:	March 11, 2016
SHEET #:	UB1		



1

NORTH WEST TWO BEDROOM UNIT - THIRD-FIFTH FLOORS UNFURNISHED

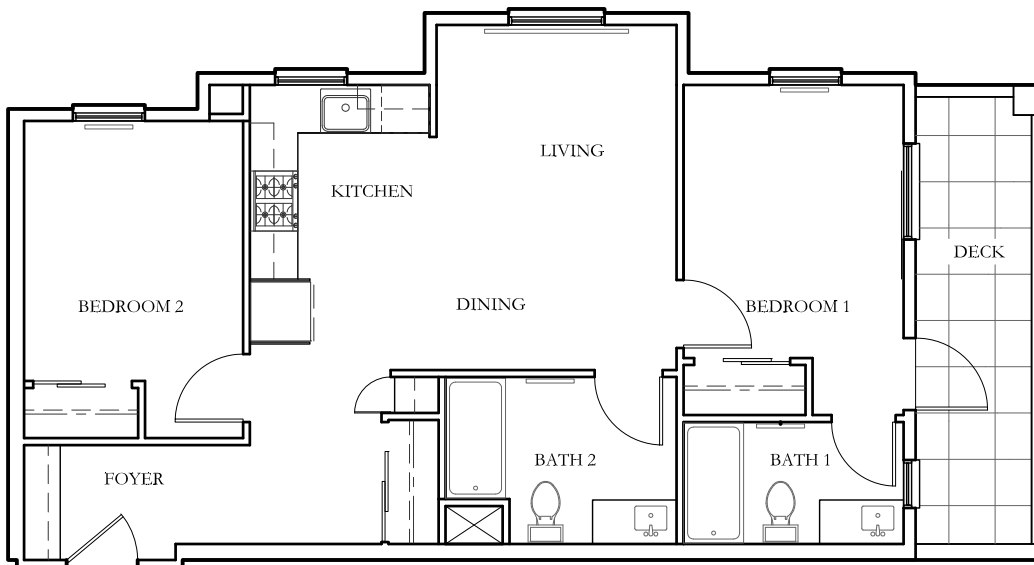
SCALE: 1/8" = 1'-0"



KIRK E. PETERSON
 ASSOC. & ARCHITECTS
 5253A College Avenue
 Oakland, CA 94610
 ph (510)547-0275
 fax (510)547-4173

THE SOUTHGATE APARTMENTS
 2526 DURANT AVENUE,
 BERKELEY, CALIFORNIA

UNIT:	B1A	SCALE:	AS NOTED
PROJECT NO.	1302	DATE:	March 11, 2016
SHEET #:	UB1A		



1

NORTH EAST TWO BEDROOM UNIT - SECOND FLOOR UNFURNISHED

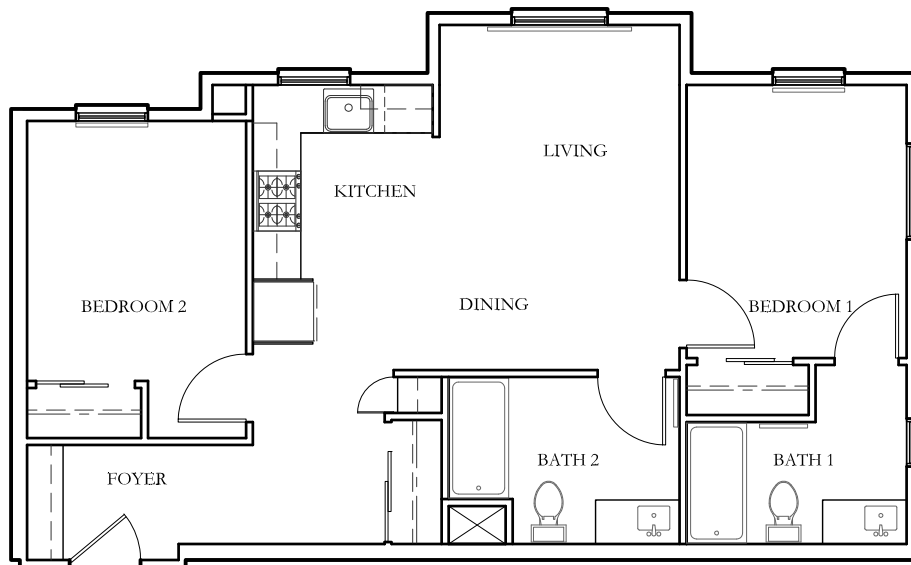
SCALE: 1/8" = 1'-0"



KIRK E. PETERSON
ASSOC. & ARCHITECTS
5253A College Avenue
Oakland, CA 94610
ph (510)547-0275
fax (510)547-4173

THE SOUTHGATE APARTMENTS
2526 DURANT AVENUE,
BERKELEY, CALIFORNIA

UNIT:	B2	SCALE:	AS NOTED
PROJECT NO.	1302	DATE:	March 11, 2016
SHEET #:	UB2		



1

NORTH EAST TWO BEDROOM UNIT - THIRD-FIFTH FLOORS UNFURNISHED

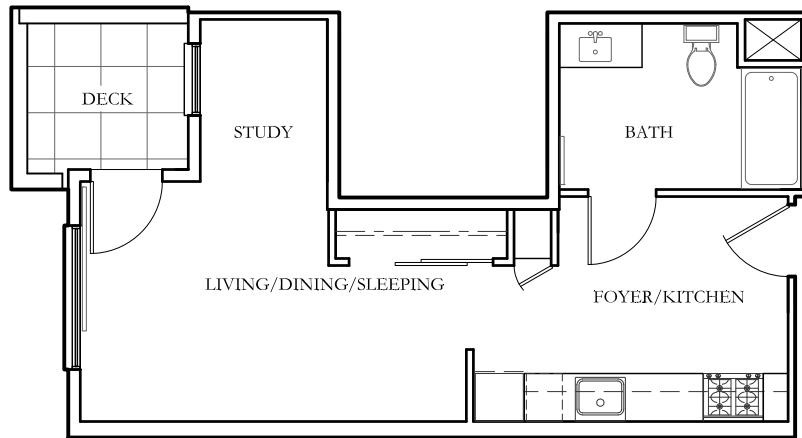
SCALE: 1/8" = 1'-0"



KIRK E. PETERSON
ASSOC. & ARCHITECTS
5253A College Avenue
Oakland, CA 94610
ph (510)547-0275
fax (510)547-4173

THE SOUTHGATE APARTMENTS
2526 DURANT AVENUE,
BERKELEY, CALIFORNIA

UNIT:	B2A	SCALE:	AS NOTED
PROJECT NO.	1302	DATE:	March 11, 2016
SHEET #:	UB2A		



1

STUDIO UNIT - SECOND FLOOR UNFURNISHED

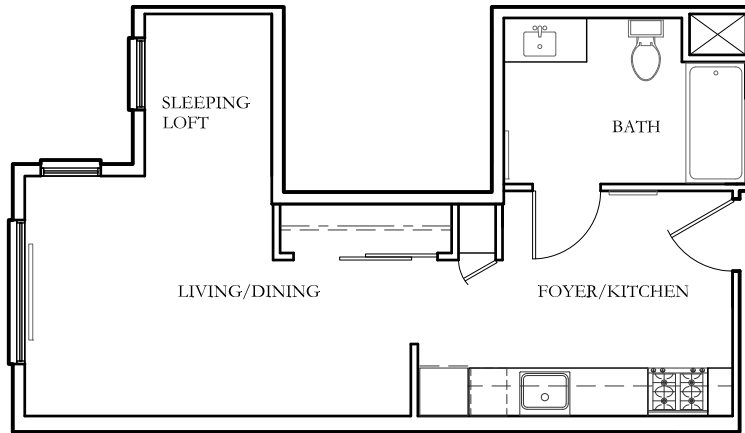
SCALE: 1/8" = 1'-0"



KIRK E. PETERSON
ASSOC. & ARCHITECTS
5253A College Avenue
Oakland, CA 94610
ph (510)547-0275
fax (510)547-4173

THE SOUTHGATE APARTMENTS
2526 DURANT AVENUE,
BERKELEY, CALIFORNIA

UNIT:	D	SCALE:	AS NOTED
PROJECT NO.	1302	DATE:	March 11, 2016
SHEET #:	UD		



1

STUDIO UNIT - THIRD-FIFTH FLOORS UNFURNISHED

SCALE: 1/8" = 1'-0"



KIRK E. PETERSON
 ASSOC. & ARCHITECTS
 5253A College Avenue
 Oakland, CA 94610
 ph (510)547-0275
 fax (510)547-4173

THE SOUTHGATE APARTMENTS
 2526 DURANT AVENUE,
 BERKELEY, CALIFORNIA

UNIT:	D1	SCALE:	AS NOTED
PROJECT NO.	1302	DATE:	March 11, 2016
SHEET #:	UD1		